

READ AND UNDERSTAND ALL INSTRUCTIONS. KNOW THE PRODUCTS APPLICATION, LIMITATIONS, AND POTENTIAL HAZARDS, PROTECT YOURSELF AND OTHERS BY OBSERVING ALL SAFETY INFORMATION. FAILURE TO FOLLOW ALL INSTRUCTIONS LISTED BELOW, MAY RESULT IN ELECTRIC SHOCK, FIRE, AND/OR SERIOUS PERSONAL INJURY. IN ADDITION MAY DAMAGE AND/OR IMPAIR ITS OPERATION AND VOID THE WARRANTY. RETAIN PRODUCT INSTRUCTIONAL MATERIAL FOR FUTURE REFERENCE.



## Definitions

- ▲ **DANGER:** Indicate[s] a hazardous situation which, if not avoided, **will** result in **death or serious injury**.
  - ▲ **WARNING:** Indicate[s] a hazardous situation which, if not avoided, **could** result in **death or serious injury**.
  - ▲ **CAUTION:** Indicate[s] a hazardous situation which, if not avoided, **may** result in **minor or moderate injury**.
- NOTICE: Indicates a practice **not related to personal injury** which, if not avoided, may result in **property damage**.

## INTRODUCTION

Your SawMaster power tool has been engineered and manufactured to our high standard for dependability, ease of operation, and operator safety. When properly cared for, it will give you years of rugged, trouble-free performance. Before using the power tool for the first time, inspect it to ensure no damage occurred during shipment. If damaged do not use and contact place of purchase for assistance.



## SAFETY PRECAUTIONS

**WARNING:** Read all instructions written below. Failure to follow the warnings and instructions may result in electric shock, fire and or/serious injury.

### JOB SITE SAFETY

- A. Be sure to connect the plug to a properly grounded receptacle to reduce the risk of electric shock.
- B. Before you start working, familiarize yourself with the work site and its surroundings.
- C. Take notice of circumstances which may impede work or traffic, observe soil conditions (good bearings or not) and take measures to ensure safety (e.g. the shielding of roadworks from public traffic).
- D. Keep work area clean and well lit.
- E. Keep out of reach of children. Before operating machine, be sure the activated machine will be of no danger to anyone.
- F. Do not expose power tools to rain or wet conditions.
- G. Never operate this unit when flammable materials or vapors are present. Electrical devices produce sparks or arcs which can cause a fire or explosion.
- H. Maintain alertness while operating the machine. Failure to maintain attention, by the operator, may lead to serious injury.
- I. When machine is plugged in do not leave it unattended.

### ELECTRICAL SAFETY

- J. To reduce the risk of electrical shock, we recommend the use of ground fault circuit interrupter (GFCI) and to refer servicing to a qualified professional.
- K. If operating power tool in a damp location is unavoidable, use a ground fault circuit interrupter (GFCI) protected supply.
- L. Do not use the tool if the cord set is damaged or the ground fault circuit interrupter (GFCI) fails the before use test.
- M. Avoid body contact with earthed or grounded surfaces such as pipes, radiators, ranges and refrigerators.
- N. When using an extension cord, make sure it is in good condition and heavy enough to carry the current drawn by the machine. Refer to the extension cord table in the "Electrical Specifications" section for the correct gauge depending on the desired cord length and the machine's horse power and voltage.
- O. Use extension cable suitable for outdoor use when operating power tool outdoors.
- P. Power tool plug must match the outlet. Never modify the plug in any way. Do not use any adapter plug with earth(grounded) power tools.
- Q. Do not use the power tool if the switch does not turn it on and off.
- R. Unplug prior to servicing.

### PERSONAL SAFETY

- S. Do not operate the machine when you are tired or while under the influence of drugs, alcohol or any medication.
- T. Do not overreach. Keep proper footing and balance at all times. When operating the saw, be sure to wear proper safety gear, such as safety glasses,

dust mask, and hearing protection. A hard hat is also recommended.

- U. Wear proper apparel. Do not wear loose clothing or accessories. Keep hair and body parts away from openings and moving parts.
- V. Make sure power switch is in "off" position before plugging in power cord to prevent any accidental activation.

### SAFE PRACTICES FOR POWER TOOL USE

- W. Never use the machine improperly or work in an unsafe manner.
- X. Wet cutting blades **MUST** be used with water.
- Y. Do not run the power tool while carrying it at your side.
- Z. Do not force the power tool. Use the correct power tool for your application.
  - a. To mount the blade, clean the arbor and outer flanges, and tighten the bolt/nut securely.
  - b. Remove any adjusting key or wrench before turning the power tool on.
  - c. Unplug prior to servicing, when changing accessories, and when not in use.
  - d. Saw blades should be inspected daily for excessive wear, core cracks and arbor damage. Replace any blade that shows signs of damage.
  - e. A visual check of the machine must be made at least once a shift to ensure that visible damages or faults are recognized. Any changes (including changes in the performance or behavior of the machine) must be reported to the supervisor. If necessary, stop the machine at once and secure it.
  - f. Do not use damaged blades. Before each use, inspect the wheels for chips and cracks. If power tool or blade is dropped, inspect for damage or install an undamaged blade. After inspecting and installing the blade, position yourself and bystanders away from the plane of the rotating wheel and run the power tool at maximum no load speed for one minute.
  - g. Wait for the blade to reach the maximum speed and use a slow feed for proper cutting.
  - h. Never carry machine by cord. Do not pull cord to unplug. Keep cord away from heat, sharp edges and oil.
  - i. Take measures to ensure that the machine is in a safe and trouble-free condition prior to usage. use the machine only when all protective devices (i.e. guards, noise absorbers, emergency-off devices) are in place and in working order.
  - j. Make sure power switch is in "off" position before plugging in power cord to prevent an accidental activation.
  - k. In the case of a malfunction, stop the machine immediately and secure it. Fix the problem as soon as possible.
  - l. Keep the power cord away from the spinning blade.
  - m. Do not modify guard minimizing blade exposure.
  - n. Wait until the spinning blade comes to a complete stop before laying the power tool down.
  - o. Only cut on horizontal surfaces when using water.
  - p. Do not cut overhead.

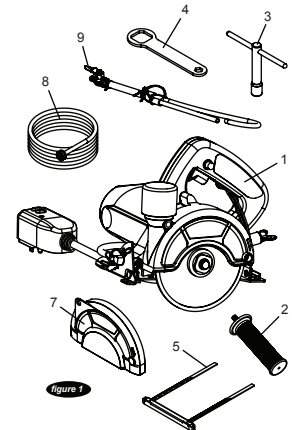
### SERVICE

- q. Only qualified repair person, using original replacement parts, should be servicing this power tool.

## UNPACKING

Open the carton box cover by lifting the top portion. Locate the accessory box and check its content for the following items before discarding any packaging:

1. Saw
2. Side handle
3. T-Socket wrench
4. Closed box wrench
5. Rip guide
6. Owner's manual
7. Dust guard cover
8. Garden hose assembly
9. Blade guard hose assembly (partially installed on power cable)
10. Manual



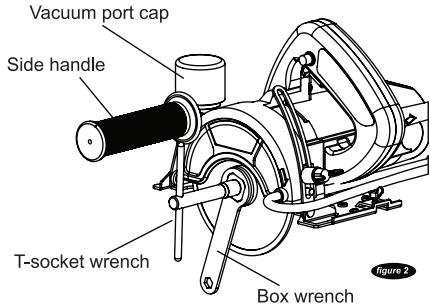
## ASSEMBLY & SETUP

1. Open the carton box.
2. Remove the rip guide and dust guard cover.
3. Remove the carton partition and remove the remaining components. Recycle packaging but retain the manual.
4. Make sure blade shaft bolt and outer flange are snug.
5. Using the provided closed box wrench and t-socket wrench, tighten and blade shaft nut.
6. If cutting wet, install the blade guard hoses onto the blade guard. Install the garden hose assembly onto blade guard hose assembly valve if necessary.
7. Install side handle onto blade guard.

BLADE INSTALLATION

**⚠ WARNING:** Disconnect the power plug before installing the blade onto the blade shaft.

- 1. Using the provided close box wrench and t-socket wrench (turning clockwise), loosen the blade shaft nut. Remove the outer flange.
- 2. Install the blade and reinstall the outer flange and blade shaft bolt (see fig. 2).
- 3. Screw in the side handle if removed (see fig. 4).



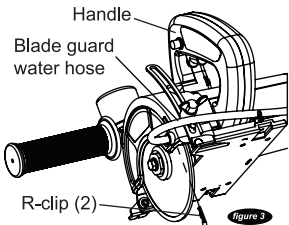
SETUP FOR WET OR DRY CUTTING

**⚠ WARNING:** Water pressure going to hose assembly should not exceed 80 psi.

**⚠ WARNING:** Disconnect the power plug before installing the blade onto the blade shaft.

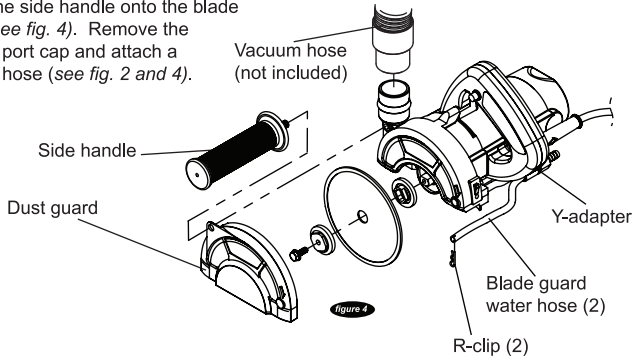
WET CUTTING

- 1. To cut wet remove side handle to remove the dust guard (see fig 4).
- 2. Insert the hose (2) to the the ports on the guard.
- 3. Re-insert the r-clip into each hose (see fig. 3).
- 4. Attach each hose to the y-fitting below the handle. Pull hoses from both ends to check if secure (see fig. 4).

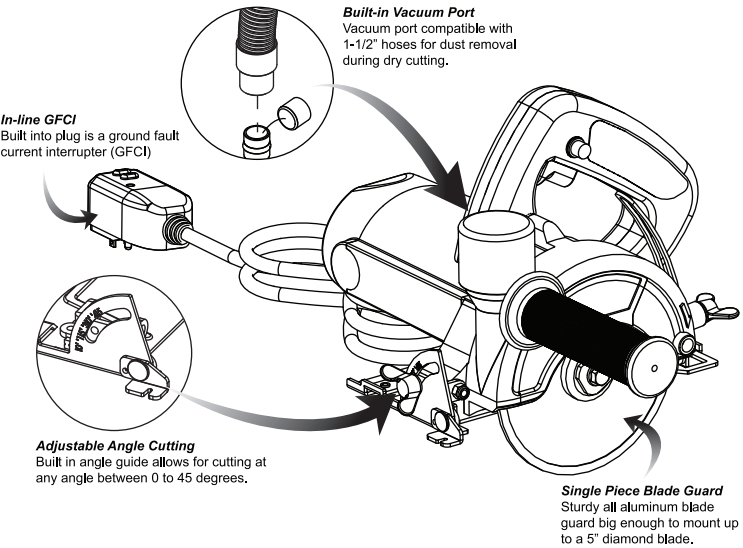


DRY CUTTING

- 1. If cutting dry, locate r-clips inserted in the hose portion protruding in the blade guard. Pull out each hose's respective r-clip. With the blade guard water hoses removed, insert r-clips back into the hose for storage. Store hoses for use later (see fig. 4).
- 2. Pull out hoses going to y-adaptor by pressing the red rings inwards and then pulling the hose out the opposite direction.
- 3. Install the dust guard.
- 4. Screw the side handle onto the blade guard (see fig. 4). Remove the vacuum port cap and attach a vacuum hose (see fig. 2 and 4).



FEATURES



ELECTRICAL SPECIFICATIONS

	<i><b>HS</b></i>
Power	10 A
Volts	115 V
Arbor (Inner flange)	20 mm
Blade Shaft RPM	12000 RPM
Cycle	60 Hz
Phase	1

EXTENSION CORD CHART

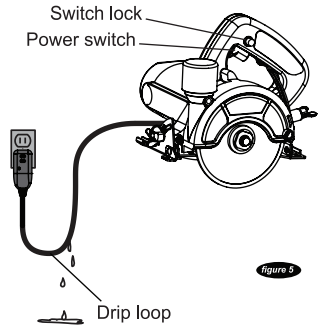
Wire Gauge	Length of Cord
No. 16	50'
No. 14	100'
No. 8	200'

**⚠ WARNING:** Always plug extension cord into GFCI protected outlet.

Note: When using extension cable follow the chart shown above. The table shows the correct size to use depending on cord length and name plate ampere rating. If in doubt, use the next heavier gauge. The smaller the gauge number, the heavier the cord.

**⚠ WARNING:** Water may travel along the power cable and come into contact with the receptacle. The user should arrange a "drip loop" in the cord that is connecting the power tool to the receptacle such that the "drip loop" hangs lower than the receptacle itself (see fig. 5).

**⚠ CAUTION:** Before pluggin in tool, always check to see that the switch actuates properly and returns to the OFF position when released.



**⚠ WARNING:** Test ground fault circuit interrupter (GFCI) before each use:

- 1. Plug GFCI into power outlet. Indicator should turn red.
- 2. Press test button. Red indicator should turn off.
- 3. Press reset button for use. Do not use if above test fails.

## OPERATING THE SAW

**⚠ WARNING:** Disconnect the power plug before installing or removing the blade or accessories, and before adjusting or making repairs to the power tool.



**⚠ WARNING:** When using this power tool, use certified safety equipment:

- ANSI Z87.1 Eye protection  
**⚠ WARNING:** Everyday eyeglasses are NOT safety glasses.
- ANSI S12.6 (S3.19) Hearing protection  
**⚠ WARNING:** Under some conditions and duration of use, noise from this product may contribute to hearing loss.
- NIOSH/OSHA/MSHA Respiratory protection  
**⚠ WARNING:** Some dust created by power sanding, sawing, grinding, drilling, and other construction activities contains chemicals known to the State of California to cause cancer, birth defects or other reproductive harm. Some examples of these chemicals are:
  - lead from lead-based paints,
  - crystalline silica from bricks and cement and other masonry products, and
  - arsenic and chromium from chemically-treated lumber.Your risk from these exposures varies, depending on how often you do this type of work. To reduce your exposure to these chemicals: work in a well ventilated area, and work with approved safety equipment, such as those dust masks that are designed to filter out microscopic particles.

**⚠ CAUTION:** Never cut overhead. Cut only on horizontal surfaces when using water.

**⚠ CAUTION:** Use clamps or other mechanical means to support and hold the workpiece to a stable platform placed on a reliable flat surface. DO NOT hold the workpiece by hand or against the body.

## DEPTH ADJUSTMENT

- Loosen depth adjustment screw (see fig. 6).
- Move the skid to the desired position.
- Retighten the depth adjustment screw.

## ANGLE ADJUSTMENT

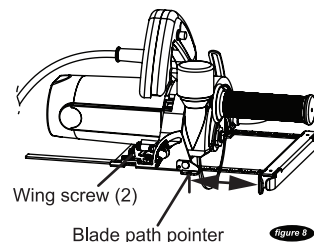
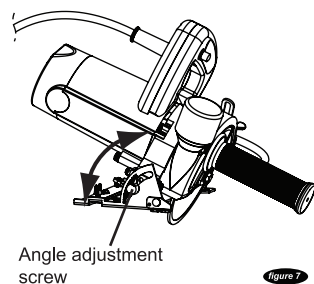
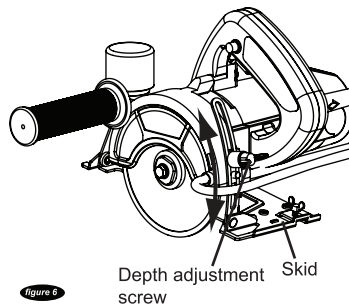
- Loosen angle adjustment screw (see fig. 7).
- Move the skid to the desired position.
- Retighten the angle adjustment screw.

## USING THE RIP GUIDE

- Loosen the two wing screws.
- Slide the rip guide into the skid (see fig. 8).
- Using the blade path pointer as reference, slide the rip guide into position.
- Retighten the two wings screws.

## STRAIGHT/ANGLED CUTS

- Using a marker or grease pencil, mark the area to be cut.
- Place the skid of the saw on the workpiece such that the blade does not touch the workpiece.
- Align the blade path pointer with the outline of the marked area.
- Turn the tool on and wait for the blade to reach its maximum rpm.
- Move the tool slowly forward while keeping the blade aligned with the cut line.



## CARE AND MAINTENANCE

**⚠ WARNING:** Disconnect the power plug before installing or removing the blade or accessories, and before adjusting or making repairs to the power tool.

**⚠ WARNING:** Wear ANSI Z87.1 approved eye protection when servicing this power tool.

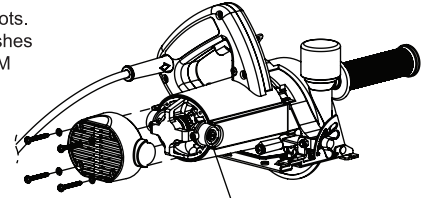
**⚠ WARNING:** Do not use aggressive cleaners (i.e. containing solvents). Doing so can weaken the plastic parts on the power tool.

## CLEANING

- Use a slightly moist cloth to clean the surface of the power tool after every use. Hard packed dirt can be removed with a soft brush.
- Blow dirt out of the air vent after every week of use.

## CARBON BRUSH REPLACEMENT

- Remove the motor fan cover (see fig.9).
- Locate the carbon brush cap. Remove the caps (turning counter-clockwise) to access the brushes (2).
- Remove the brushes.
- When installing the new brushes, make sure they fit snugly into the slots. Do not modify the replacement brushes (i.e. file them down) or use non OEM brushes, as it may damage the armature and in doing so voids the manufacturer warranty.
- Replace the carbon brush caps.
- Reassemble the motor fan cover.



## WARRANTY

For a period of one (1) year from the original date of purchase, if the product is determined to be defective, SawMaster will repair or replace the product, at its option, at no charge to the customer, or pay the associated repair costs to an authorized service facility. All replacement parts, new or rebuilt, supplied at SawMaster's option for repairs will be warranted for the remainder of the original warranty period of one (1) year.

All defective products or components replaced under this limited warranty will become the property of SawMaster. This limited warranty excludes all components not manufactured by SawMaster.

This warranty does not cover cosmetic damages or damages due to (1) misuse, abuse, negligence, accident, or modifications of the product or any of its components; (2) improper operation or failure to provide reasonable maintenance; or (3) attempted repair by any party other than a SawMaster authorized service facility. All products are subject to wear and tear under normal use. As such, the customer is responsible for all costs associated with the maintenance of said product, including the purchase of replacement components thereof.

To obtain warranty service, you must take the product, or deliver the product freight prepaid, in either its original packaging or packaging affording an equal degree of protection, to any authorized SawMaster service facility, along with proof of purchase in the form of a bill of sale, within the warranty period specified above. Warranty may be void if additional damages are incurred during transportation due to inadequate packaging.

SawMaster shall not be responsible for or obligated to pay for freight or other transportation related costs or expenses in connection with any defective products or components that are either returned to SawMaster's facility or any authorized repair station and/or any replacement products or components that are shipped from SawMaster pursuant to this warranty.

SAWMASTER SHALL NOT BE LIABLE FOR ANY INCIDENTAL OR CONSEQUENTIAL DAMAGES FOR BREACH OF ANY EXPRESS OR IMPLIED WARRANTY, OR NEGLIGENCE. SUCH DAMAGES INCLUDE, BUT ARE NOT LIMITED TO, LOSS OF PROFITS, LOSS OF REVENUE, LOSS OF USE OF THE PRODUCT, AND DOWN TIME. SAWMASTER'S LIABILITY SHALL NOT EXCEED THE REPLACEMENT COST OF ANY DEFECTIVE PRODUCT OR COMPONENT THEREOF. THIS LIMITED WARRANTY IS IN LIEU OF ALL OTHER WARRANTIES, WHETHER EXPRESSED OR IMPLIED.

## HOW TO ORDER

All customer service (e.g. technical questions, reordering of parts, etc.) will be provided by SawMaster. All spare parts for after sales service will be stocked and shipped from our warehouse.

## CONTACT US

We at SawMaster pride ourselves on our customer service. If you have any questions regarding our products, whether it may be product inquiry or troubleshooting, please don't hesitate to contact us. We will do our best to answer your questions. In some cases, we may even refer you to a local sales representative that can better service you. You can call us at the contact information listed below:

### CUSTOMER SERVICE

Phone: 888-688-6899 / 951-352-8887  
Fax: 951-352-2118  
Email: [sales@sawmaster.com](mailto:sales@sawmaster.com)  
Web: [www.sawmaster.com](http://www.sawmaster.com)